

Mini Squeeze Strainer

Mini Squeeze Strainer

Instructions



1. Attach covers to clamp.



2. Clamp housing to a table.



3. Put nylon bushing first, then pressure bushing onto rear of scroll.



4. Insert scroll into housing.



5. Attach handle to the rear with handle wing nut & plate.



6. Insert nylon gasket into screen.



7. Slide screen over scroll and twist to lock in place.



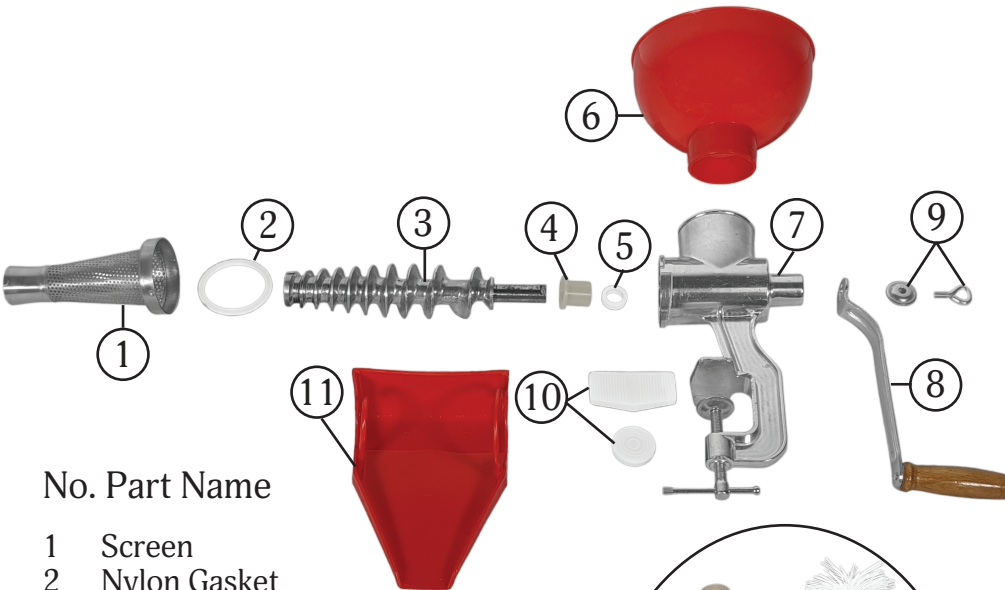
8. Attach tray under screen.



9. Insert bowl and twist to lock to the top of the housing.



10. Ready to use and process your favorite fruit or vegetable.



No. Part Name

- 1 Screen
- 2 Nylon Gasket
- 3 Scroll
- 4 Nylon Bushing
- 5 Pressure Bushing
- 6 Bowl
- 7 Housing
- 8 Handle
- 9 Handle Wing Nut & Plate
- 10 Top & Bottom Clamp Cover
- 11 Tray



Before Use

Have Mini Squeeze Strainer already washed and ready. For assembly, follow figures 1 through 9.

To Use

- Do not put hot food into the Mini Squeeze. Let hot food cool first!
- Follow the recommendations on the page.
- Fill the hopper only about half full and press down with the plunger while turning the handle clockwise.
- If skins seem too wet, run them through again.

When You're Done

Dissassembly is the reverse of assembly. Wash all parts in soapy water (not in the dishwasher) and dry thoroughly. The gasket and nylon bushing in the screen will wear with use and can be replaced easily using the available Screen Renew Kit.